



SNAKEPIT[®] ROADWAY

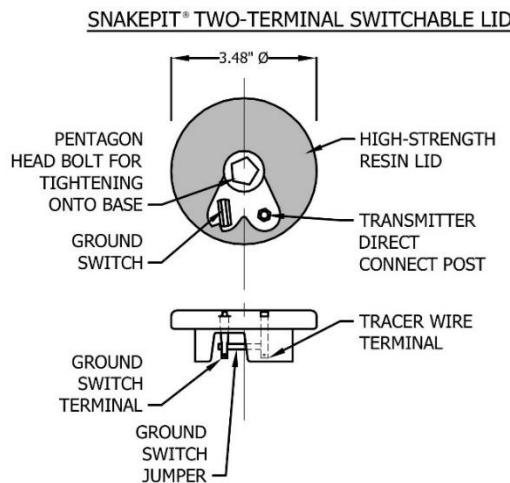
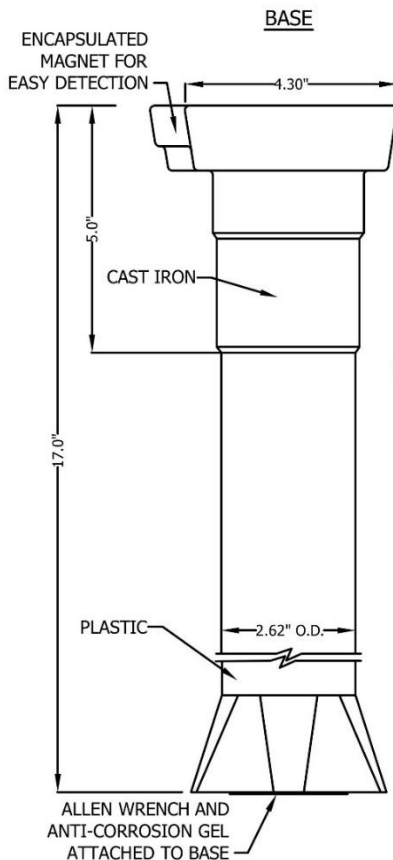
with Two-terminal Switchable Lid

ACCESS POINT

APPLICATION

Use to terminate tracer wire systems and provide direct connection to tracer wire and ground rod, at ground level, in roadway applications. Two-terminal Switchable Lid allows locator to switch ground off and on from top of lid to isolate targeted sections of tracer wire systems. **No need to remove lid.**

Package includes: base, lid, anti-corrosion gel, Allen wrench, installation instructions



RB14*2T-SW– SnakePit Roadway with Two-terminal Switchable Lid
(* denotes color)



Patent Pending

FEATURES AND BENEFITS

- Once-and-done installation
- Two-terminal, switchable lid allows for direct connection to tracer wire and ground rod from the top of the lid; single terminal also available
- 5" cast iron collar withstands heavy traffic
- Anti-corrosion gel protects wire
- Locking cover protects against tampering
- Encapsulated magnet allows for detection by a ferrous metal detector
- Lid color-coded to meet American Public Works (APWA) standards for utility identification

APWA UNIFORM COLOR CODE

	ELECTRIC
	GAS
	COMMUNICATION
	POTABLE WATER
	SEWER
	RECLAIMED WATER

SPECIFICATIONS

SCOPE

These specifications apply to the SnakePit® Roadway Access Point with the Two-terminal Switchable Lid.

MATERIAL AND DESIGN

Lid Material

- Non-corrosive, injection molded resin
- Flexural modulus 986000 psi, Conditioned (ISO 178)
- Flexural strength 28300 psi, Conditioned (ISO 178)
- Impact rating 43 (-22°F) / 44 (73°F) ft lb/in², Charpy unnotched (ISO 179/1eU)
- Melting temperature 451° F (ISO 11357-3)
- Hardware
 - pentagon head bolt - anodized aluminum
 - terminals and jumper - brass

Base Material

- High-grade ABS rigid plastic (ASTM D1788, Type 1)
- Cast iron collar

Detection

- Access point base designed with magnet securely attached to be easily detected by magnetic locators even when access point is covered by soil, sod and/or paving material

Security

- Locking mechanism secures lid to base in a closed position
- Notched bolt end prevents loss of locking mechanism
- Locking mechanism can only be removed with the proper pentagon wrench

Shape

- Tubular (cylindrical) construction with removable round lid
- Support flange at base

Wire Connections

- Ground switch/terminal used to connect ground wire and to engage/disengage the ground connection
- Ground switch designed to resist unintentional switching - use pliers to switch on/off
- Ground switch, when in 'OFF' position, may be used to ground locate transmitter
- Direct connect post designed for utility locate transmitter positive lead
- Set screws used to secure tracer wire and ground wire to terminals
- Anti-corrosion gel supplied with lid must be applied to wire connections and ground switch jumper to protect connection points
- Access point designed for operational access to underground tracer wire systems

Lid Position

- Access point designed so that when installed, the collar will be flush with the surface and contain the lid so that it will not be in contact with the adjoining backfill or pavement
- The top surface of the access point lid is flush with the top of the base. The top of the bolt, when completely tightened, is flush with or below the lid surface.

QUALITY ASSURANCE

- Copperhead products are manufactured under a quality control system that ensures products are free of defects and meet performance requirements.
- Copperhead provides best-in-class customer service. We promise to put forth our best efforts for our customers and to treat everyone we encounter with courtesy and respect.

